



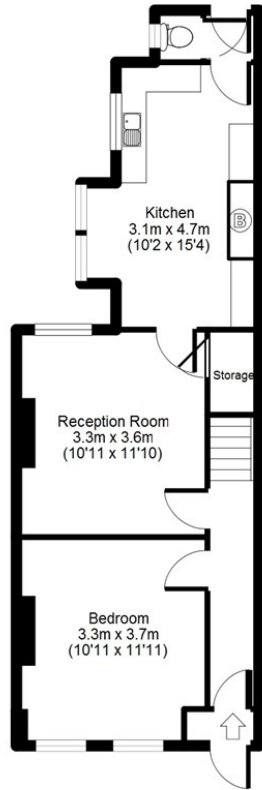
Lymington Avenue, Wood Green, N22 6JE

PCM  
£2,100 PCM

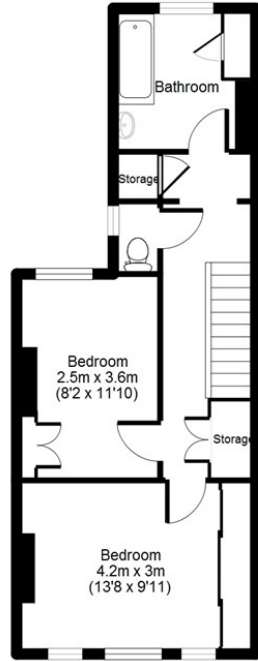
 Coultons

# Lymington Avenue, Wood Green, N22

APPROX GROSS INTERNAL FLOOR AREA: 911 sq. ft / 85 sq. m



Ground Floor



First Floor

For identification purposes only  
Measurements are approx and not to scale



Energy Efficiency Rating		Current	Potential
Very energy efficient - lower running costs			
(92 plus) A			88
(81-91) B			
(69-80) C			
(55-68) D			
(39-54) E		47	
(21-38) F			
(1-20) G			
Not energy efficient - higher running costs			
England & Wales		EU Directive 2002/91/EC	



Agents Note: Whilst every care has been taken to prepare these particulars, they are for guidance purposes only. All measurements are approximate and are for general guidance purposes only and whilst every care has been taken to ensure their accuracy, they should not be relied upon and potential buyers/tenants are advised to recheck the measurements



### OFFICE DETAILS

26 Station Road  
North Chingford  
London  
E4 7BE

020 8090 0860  
lettings@coultons.co.uk  
www.coultons.co.uk

### OFFICE DETAILS

425a Lordship Lane  
Wood Green  
London  
N22 5DH

020 3869 8989  
lettings@coultons.co.uk  
www.coultons.co.uk